

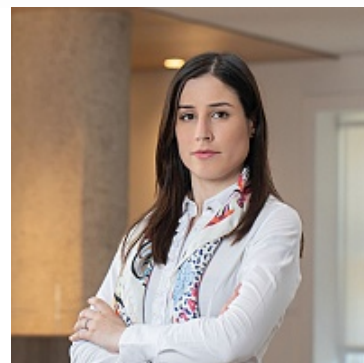
## Ana M Silva

Associate

T. +351 220 308 800

E. [a.silva@telles.pt](mailto:a.silva@telles.pt)

S. <https://www.telles.pt>



## Main Areas of Practice

---

- Tax

## Professional Curriculum

---

- **Associate at TELLES (2019)**
- Senior Tax Consultant at AccruePartners (2017 - 2019)
- Tax Consultant for the M&A Tax Departments at PwC (2016 - 2017)
- Tax Consultant at AccruePartners (2014 - 2016)
- Associate at MBC & Associados (2014)
- Trainee at MBC & Associados (2013 - 2014)
- Trainee at Cerejeira Namora, Marinho Falcão (2011 - 2013)

## Academic Curriculum

---

- **Admitted to the Portuguese Bar Association (2014)**
- Master's Degree in Tax Law, Faculty of Law, University of Minho (2014)
- Law Degree, Faculty of Law, University of Porto (2011)

## Languages

---

Portuguese, English, French and Spanish